

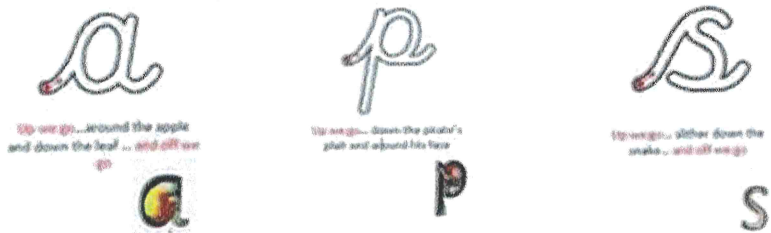
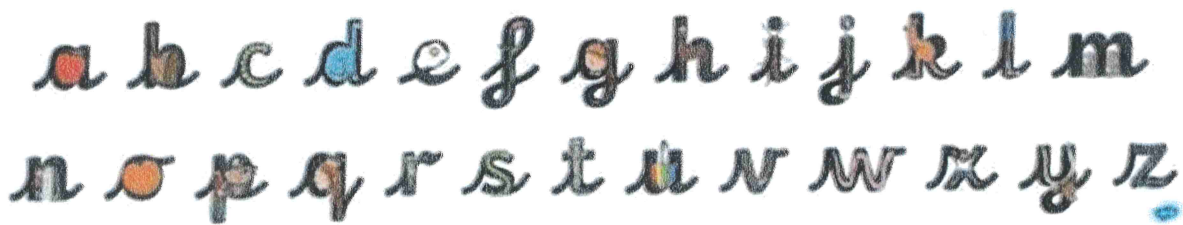
Home learning support for RWI/phonics

Rhymes for letter formation - taken from Read Write Inc
Speed Sounds Set 1

a	b	c	d	e	f
g	h	i	j	k	l
m	n	o	p	qu	r
s	t	u	v	w	x
y	z				

ay	ee	igh	ow	oo
oo	ar	or	air	ir
ou	oy			
ea	oi			
a-e	i-e	o-e	u-e	aw
are	ur	er	ow	ai
oa	ew	ire	ear	ure

Supporting your child with cursive handwriting.



To assist with supporting cursive writing we adopt the phrase 'Up we go' and 'Off we go' as we lead in and lead out of the letter we are forming.

Below is a link to a Ruth Miskin video to help you support your child with reading.

<https://www.ruthmiskin.com/en/find-out-more/parents>